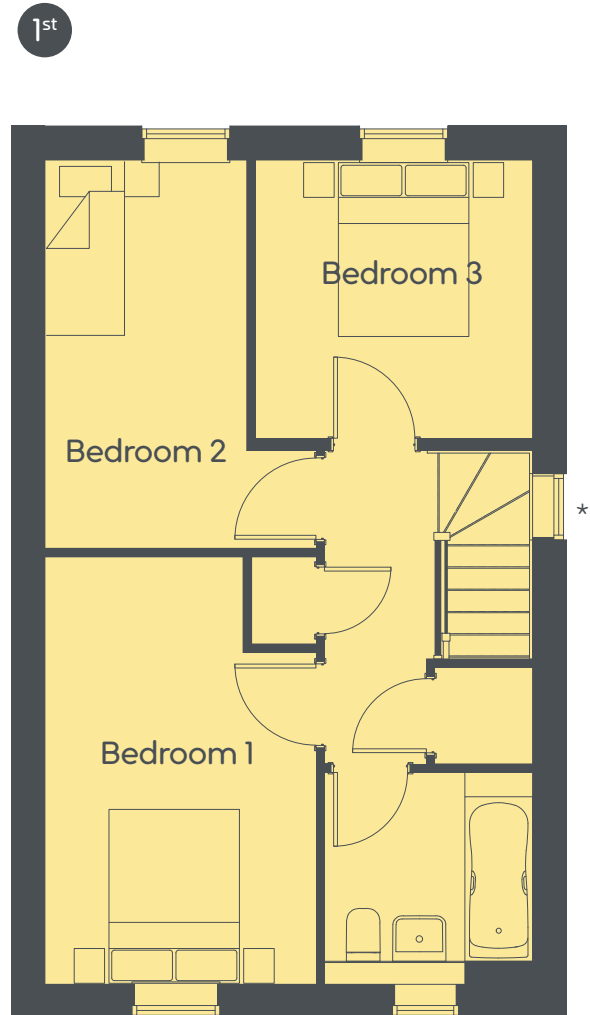
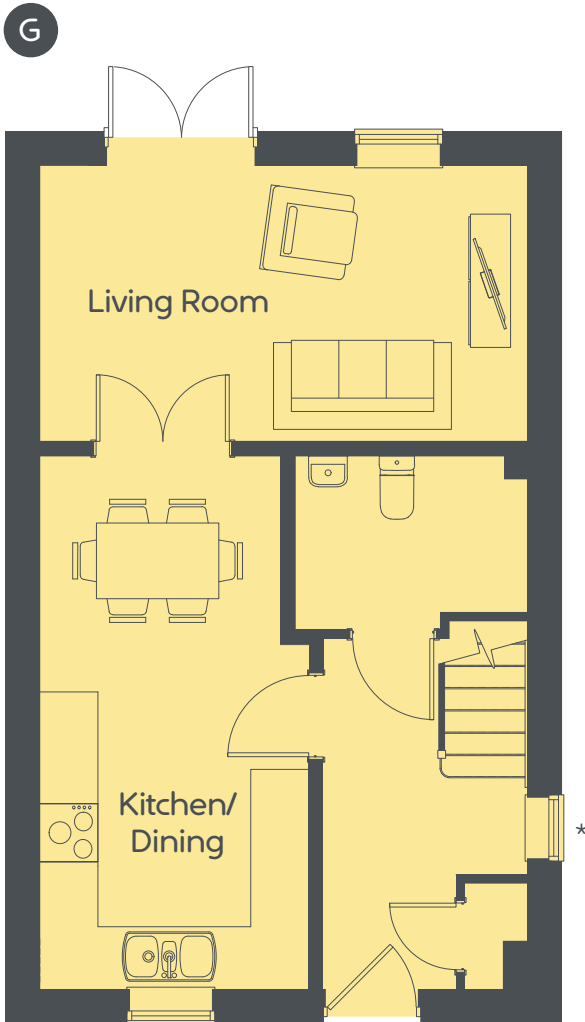


# Locking Parklands

3 Bedrooms



www.curo-sales.co.uk



## The Beckford

3 Bedrooms | Total area: 85 M<sup>2</sup> 914 FT<sup>2</sup>

### Ground Floor

<b>Kitchen/Dining</b> 5.51 x 2.78m 18' 1" x 9' 1"	<b>Living Room</b> 5.04 x 2.85m 16' 6" x 9' 4"
--	---

### 1st Floor

<b>Bedroom 1</b> 4.42 x 2.80m 14' 6" x 9' 2"	<b>Bedroom 2</b> 4.01 x 2.80m 13' 2" x 9' 2"	<b>Bedroom 3</b> 2.88 x 2.87m 9' 5" x 9' 5"
---	---	--



\*Window is plot specific. Please speak to your sales executive for details. Maximum dimensions and some plots are handed compared to floor plans shown. Please speak to our sales executive for details. The floor plans depict a typical layout for this house type and room layouts are indicative only. For exact specification details of external and internal finishes, dimensions and floor plan differences please consult your sales executive. All dimensions are + or - 50mm and floor plans are not shown to scale. May 2024.